



Warsaw, 13 August 2025

DOOŚ-WST.442.7.2025.ZM.1

As per distribution list

Notification pursuant to Article 3 of the Espoo Convention¹ regarding a planned project consisting of four offshore wind farms located in areas 14.E.1, 14.E.2, 14.E.3, 14.E.4.

Dear Sirs,

In accordance with Article 3 of the Espoo Convention and Article 7 of Directive 2011/92/EU², I hereby give notification of the planned construction of **four offshore wind farms located in areas 14.E.1, 14.E.2, 14.E.3, 14.E.4**, in the Exclusive Economic Zone (EEZ) of Poland in the Baltic Sea.

Information on the projects

The above-mentioned projects involve the construction, operation and decommissioning of offshore wind farms. The OWFs will be located in the western part of the Polish EEZ in the immediate vicinity of the Danish EEZ (area 14.E.3), approximately 14 km from the German EEZ (the nearest area 14.E.2) and 113.5 km from the Swedish EEZ (the nearest area 14.E.3). Due to the location of the planned projects and potential transboundary impacts, in particular cumulative impacts, the documentation for all four OWFs is being submitted together. The location of the planned OWFs 14.E.1, 14.E.2, 14.E.3 and 14.E.4 is shown in *Figure 1*.

OWF 14.E.1

The area of OFW 14.E.1, within which the turbines and accompanying infrastructure will be installed is 82.44 km². The maximum installed capacity will be 812 MW. The maximum number of turbines will be 54.

OWF 14.E.2

The area of OFW 14.E.2, within which the turbines and accompanying infrastructure will be installed, is 91.8 km². The maximum installed capacity will be 896 MW. The maximum number of turbines will be 59.

¹ Convention on Environmental Impact Assessment in a Transboundary Context, drawn up in Espoo on 25 February 1991 (Journal of Laws of 1999, No. 96, item 1110, as amended).

² Directive 2011/92/EU of the European Parliament and of the Council of 13 December 2011 *on the assessment of the effects of certain public and private projects on the environment* (consolidated text) (OJ EU L 26 of 2012, p. 1, as amended)

OFW 14.E.3

The area of OFW 14.E.3, within which the turbines and accompanying infrastructure will be installed, is 125.89 km². The maximum installed capacity will be 1204 MW. The maximum number of turbines is 80.

OFW 14.E.4

The area of MFW 14.E.4, within which the turbines and accompanying infrastructure will be installed, is 147.69 km². The maximum installed capacity will be 1204 MW. The maximum number of turbines is 80.

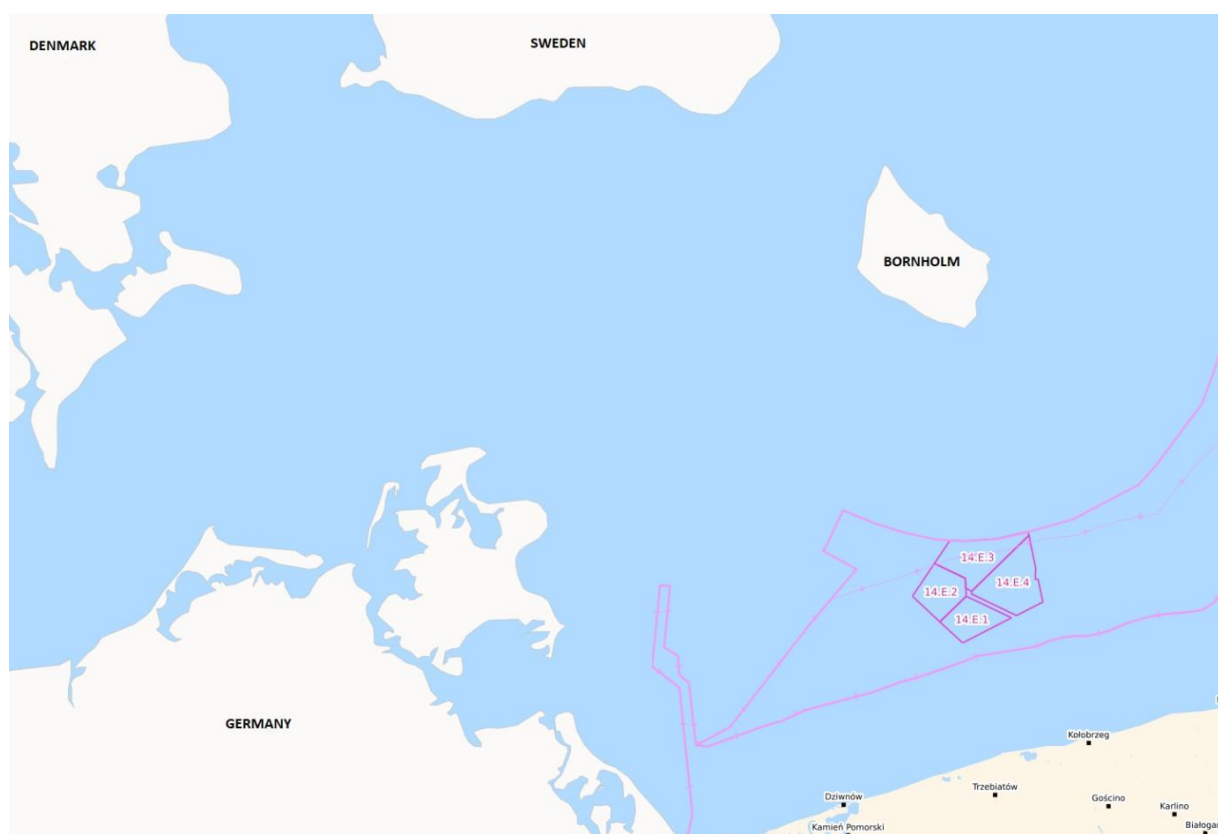


Figure 1 Location of OWF 14.E.1, 14.E.2, 14.E.3, 14.E.4 in the Polish Exclusive Economic Zone (source: www.sipam.gov.pl)

Transboundary environmental impact

The location of the project away from the borders of other countries does not exclude the possibility of transboundary environmental impacts associated with its construction, operation and decommissioning. The preliminary identified potential transboundary impacts concern the impact on birds and bats, as well as marine mammals and fish. The source of impacts in this type of project may be, for example, underwater noise generated during the installation of wind turbine foundations and power stations in relation to marine mammals and fish, including cumulative impacts with other planned and existing offshore wind farms. A wind farm with structures rising more than 350 m above sea level may constitute a permanent migration barrier for birds and bats.

Description of the environmental impact assessment procedure

The notification covers the construction of four offshore wind farms. In accordance with Polish regulations on environmental impact assessments, each of them requires a separate decision on environmental conditions. The procedure for issuing an environmental decision is preceded by an environmental impact assessment. The justification for this decision includes information on the manner and extent to which the findings contained in the environmental impact assessment documentation, the results of the transboundary environmental impact assessment, if conducted, comments and conclusions submitted during public participation, as well as the opinions of the relevant authorities have been taken into account.

The Regional Director for Environmental Protection in Szczecin is the competent authority for conducting environmental impact assessments and issuing decisions on environmental conditions. The General Director for Environmental Protection is the competent authority for coordinating proceedings on transboundary environmental impact with the affected Parties.

Current stage of proceedings

At this stage of the environmental impact assessment, the affected Party that intends to participate in the environmental impact assessment procedure may submit comments on the information contained in the Project Information Sheet, which will then be taken into account when determining the scope of the report on the environmental impact of the project (*scoping*) by the Regional Director for Environmental Protection in Szczecin.

I enclose the following documentation:

1. applications for a decision on environmental conditions (4 documents) in Polish, Swedish, Danish, German and English;
2. Project Information Sheet (4 documents) in Polish, Swedish, Danish, German and English;
3. decision of Regional Director Environmental Protection in Szczecin on conducting proceedings on transboundary environmental impact (4 documents), in Polish and English;
4. a clause on personal data protection under the GDPR in Polish, Swedish, Danish, German and English.

The above-mentioned applications for environmental decisions, Project Information Sheets (KIP) with a GDPR clause and relevant translations are available for download at the following address until 31 October 2025:

[Polish Offshore Windfarms](#)

Declaration of participation as an affected party in proceedings concerning transboundary environmental impact

I kindly request an immediate confirmation of receipt of this letter together with its attachments.

Within 30 days of receiving this notification, please send the following information:

- a statement of your position regarding participation in the transboundary environmental impact procedure as an affected Party in accordance with the Espoo Convention;

- comments on the scope of the report on the impact of the project on the environment;
- an indication of whether your position and comments concern the area designated for the construction of four OWFs as a whole or only selected OWF locations.

Please send your response to the above address:

Point of Contact for the Espoo Convention

Dorota Toryfter-Szumańska

e-mail: dorota.toryfter-szumanska@gdos.gov.pl

cc: zuzanna.majewska@gdos.gov.pl ; sekretariat.doos@gdos.gov.pl

Yours sincerely,

DOROTA TORYFTER-SZUMAŃSKA
Deputy Director
Department of Environmental Impact
Assessment
/ – digitally signed/

Distribution list:

DENMARK

Maria Birkholm SØNDERMARK
Agency for Green Transition and Aquatic Environment
Ministry of Green Transition
E-mail: espoo@sgav.dk

GERMANY

Ms. Isabel LANG
Federal Ministry for the Environment,
Nature Conservation, Nuclear Safety and Consumer Protection
Division G I 2

Ms. Kalina PENEVA-GÄDEKE
Federal Ministry for the Environment,
Nature Conservation, Nuclear Safety and Consumer Protection
Division G I 2

E-mail: GI2@bmuv.bund.de

SWEDEN

Richard KRISTOFFERSSON
Environmental Planning and Compliance Department
Swedish Environmental Protection Agency
E-mail: espoo@swedishepa.se

For the attention of:

1. Regional Director for Environmental Protection in Szczecin
2. Energa MFW 1 sp. z o.o;
3. Energa MFW 2 sp. z o.o.;
4. ORLEN Neptun III sp. z o.o.
5. ORLEN Neptun IV Ltd.